



HOW TO MEASURE FOR YOUR KITCHEN

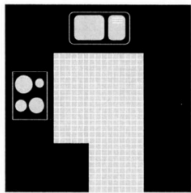
Cabinetland, the Experts. Our Design Experts design kitchens, bathroom, and every room of the house to suit your specific desires, needs, and tastes.

We ask that you provide Cabinetland with some basic measurements to begin your design process. These initial measurements don't have to be super accurate at this stage in your planning. But they will allow us to walk you through our showroom and help you design the room you want and need.

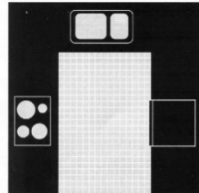
If you decide to order your project, Cabinetland will come to your home to verify all measurements before we place the order. This insures a perfect fit and places the responsibility of measurements on Cabinetland.

1. Please use this guide to provide Cabinetland with the measurements for the initial phase of your project.

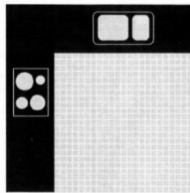
Using the example below, what shape best describes your kitchen?



G-Shape



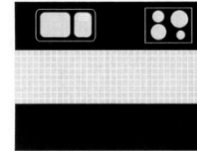
U-Shape



L-Shape



Straight



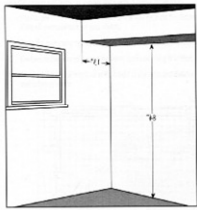
Galley

My kitchen is a _____ shaped kitchen.

2. Write down the measurements (in inches) of each appliance in your kitchen.

Appliance	Width	Height	Depth
Dishwasher			
Stove			
Microwave			
Refrigerator			
Other			

3. Using the example below, what is the height of your area from floor to ceiling.

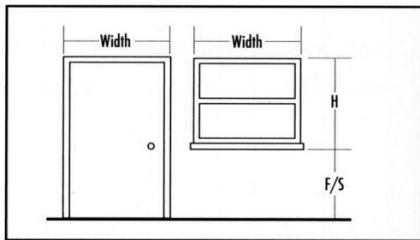


My area height is _____ from floor to ceiling.

My area height is _____ from floor to soffit.

My soffit depth is _____.

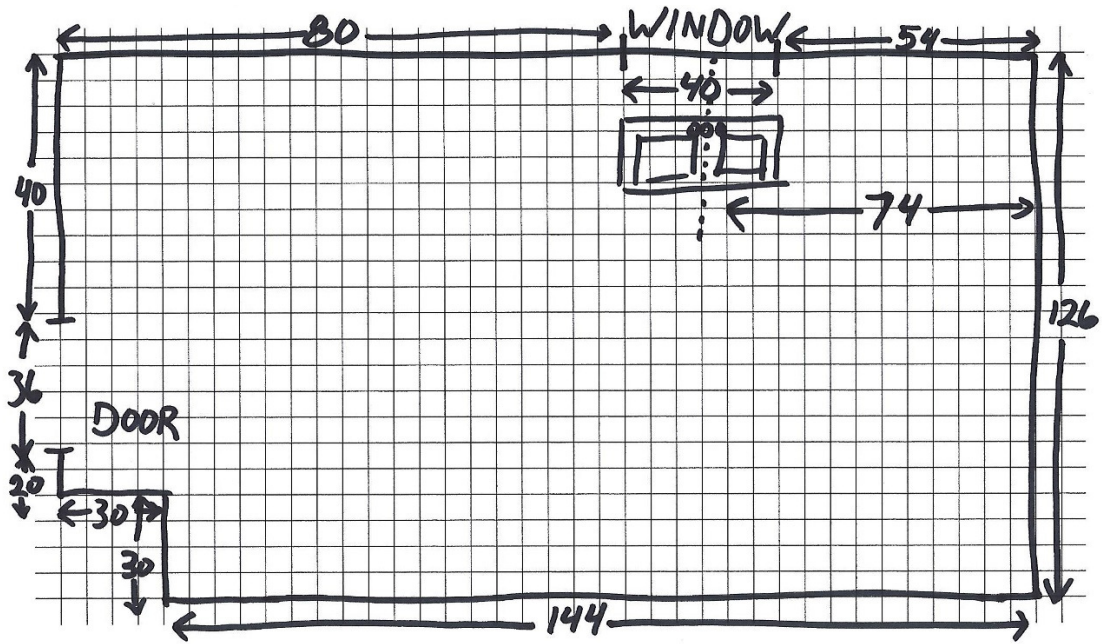
4. Using the example below, write down the measurements of the windows and doors in your room. Be sure to measure from the outside of the trim to the outside of the trim.



Windows	Width	Height	Distance From Floor To Trim
Window 1			
Window 2			
Window 3			
Window 4			

Doors	Width	Height
Door 1		
Door 2		
Door 3		
Door 4		

5. Use the example below to make a sketch of your room including wall measurements, any windows or doors, and anything that can't move such as gas, electric, plumbing, and duct work.



Your drawing does not have to be to scale, but please include as many measurements as you can.

